



DIXIE FIRE INCIDENT UPDATE

Date: 7/25/2021 Time: 7:00 p.m.



@CALFIRE_ButteCo
@USFSPlumas
@LassenNF



@CALFIREButteCo
@USFSPlumas
@LassenNF

Information Line: (530) 538-7826

Media Line: (530) 588-0845

Incident Website: www.fire.ca.gov

INCIDENT FACTS

Incident Start Date: 7/13/2021		Incident Start Time: 5:15 p.m.	
Incident Type: Vegetation		Cause: Under Investigation	
Incident Location: Feather River Canyon near Cresta Powerhouse			
Size: 192,849 acres	Containment: 21%	Expected Full Containment: Unknown	
Civilian Injuries/Fatalities: 0		Firefighter Injuries/Fatalities: 0	
Structures Threatened: 10,721	Structures Destroyed: 16 Other Minor Structures: 6	Structures Damaged: 1	


CURRENT SITUATION

Incident Update



Dixie Fire West Zone – The Dixie Fire continues to show active fire behavior. There is active surface fire transitioning to active sustained crown fire in aligned drainages with spotting up to 1 mile out. Roll out continues to be a control issue. Firefighters continue to strengthen control lines. The leading edge of a monsoonal moisture push is approaching the area this afternoon, and will lead to the increasing potential for large pyrocumulus or cumulonimbus development over the fire area this afternoon and evening.

Dixie Fire East Zone – The East Zone of the Dixie fire was impacted by extreme fire behavior yesterday. The fire burned into the Greenville Wye and burned across both Highway 70 and Highway 89. Firefighters engaged immediately in structure protection in nearby communities. The communities of Paxton and Indian Falls were the most severely impacted. Several strike teams of engines were in the area fighting to protect structures as the fire intensified. They remained in the area overnight as the fire remained active. The Fly Fire and the Dixie Fire have burned together. The Fly Fire has run to the top of Mt. Hough and is now expected to back down the mountain to the northeast. Preparations made to the communications infrastructure on the mountain top were successful in preventing fire damage. Firefighters are preparing fire line southwest of Taylorsville to protect the community as the fire advances. They are also working on dozer line across the top of the fire. Extreme fire behavior is expected again today. Atmospheric conditions are less stable and large pyro cumulus clouds are expected to develop over the fire increasing the potential for spot fires and rapid fire growth. As conditions become safer a damage assessment team will survey the area to determine the extent of structure damage.

<p>Dixie Fire Evacuation Map</p> 	<p>For more information on the Dixie Fire, click the following links:</p> <p>CAL FIRE Website- https://www.fire.ca.gov/incidents USFS Information- https://inciweb.nwcg.gov/incident/7690/</p> <p>7pm Daily Virtual Community Meeting Facebook Live & Zoom CAL FIRE/Butte County- https://www.facebook.com/CALFIREButteCo Zoom - https://us02web.zoom.us/j/81721688745</p> <p>Dial USA 215-446-3649 Conference code: 746758 USA 888-557-8511 (US Free) Conference code: 746758</p>
<p>Evacuation Orders Plumas County</p>	<p>PLUMAS COUNTY Per the Plumas County Sheriff's Office:</p> <p>Evacuation Orders include the west shore of Lake Almanor from the Canyon Dam, northwest to Hwy. 36 at Hwy. 89. This includes the communities of Prattville, Big Meadows, and Lake Almanor West along with the Rocky Point Campground and the Canyon Dam Boat Launch. High Lakes (PLUMAS COUNTY) Recreational area of Plumas County east of the Butte/Plumas County line. Plumas/Butte County line east to Twain includes both sides of Hwy. 70 in the areas of Rock Creek, Storrie, Tobin, Belden, Caribou Rich Bar, and Twain.</p> <p>Meadow Valley and Bucks Lake, Bucks Lake Rd. at Riverdance, and everything west, to the Butte/Plumas County line. This includes Snake Lake, Meadow Valley, Tollgate, Bucks Lake, Bucks Lake Highlands, and all surrounding areas.</p> <p>Caribou Rd. north to the Humbug Rd. and Humboldt Rd. intersection. This includes Belden Reservoir and Butt Valley Reservoir, Prattville, Butt Reservoir Road, and everything west to the Butte/Plumas County line, and the community of Seneca south to Hwy. 70.</p> <p>P Zone 1- <u>Evacuation Order</u> for High Lakes area, Storrie, Tobin, and Rock Creek. Evacuation Order for Belden, Rich Bar, Virgilia, Seneca, and Twain communities along the SR70 corridor. Evacuation Order to begin at SR70 at Pulga Rd. along the north edge of the SR70 corridor to Rich Bar Rd., from SR70 at Rich Bar Rd., to the north along the Pacific Crest Trail to the Plumas /Butte Co. line, from the Plumas Co./Butte Co. line west along the county line to the intersection of SR70 and Pulga Rd.</p> <p>P Zone 2- <u>Evacuation Order</u> for Meadow Valley and Bucks Lake communities. Evacuation to include the south edge of the SR70 corridor, from Belden east to Twain, south from Twain to Snake Lake Rd. at Bucks</p>

**Evacuation
Orders Cont.
Plumas County**

Lake Rd., to include the communities of Spanish Ranch and Meadow Valley, from south, on Bucks Lake Rd. at Snake Lake Rd. to the intersection of Bucks

Lake Rd. and Big Creek (south), from the intersection of Bucks Lake Rd. and Big Creek Rd. (south) along Bucks Lake Rd. to the Plumas/Butte Co. line, from Bucks Lake Rd. at the Plumas/Butte Co. line to the north, along the Plumas/Butte Co. line, where it intersects with SR70 at Pulga Rd.

P Zone 3- Evacuation Order for the Caribou area. Evacuation to include SR70 at Virgilia to the north along the east shore of Butt Valley Reservoir, to the intersection of Humbug Rd. and Humboldt Rd, to the east along Humbug Rd. to the Butte Co. line, to the south along the Butte Co. line to Chips Creek, east along Chips Creek to SR70, east along the north edge of the SR70 corridor to Virgilia.

P Zone 4A- Evacuation Order for the Paxton, Seneca, Long Valley, and East Butt Lake area. Evacuation Warning to include the Paxton area at SR70, north to the Long Valley, west to the south side of Butt Valley Reservoir, from the south side of Butt Valley Reservoir to SR70 at Virgilia, east along the north edge of the SR70 corridor to Paxton.

P Zone 4B- Evacuation Order in the Long Valley and Seneca Communities starting from the Long Valley area north along Wolf Creek Rd., to the intersection of Wolf Creek Rd. and South Almanor, from the intersection of South Almanor and Wolf Creek Rd. west along South Almanor, continuing west along Fox Farm Rd. to the intersection of Humbug-Humboldt Crossing Rd., from the intersection of Fox Farm Rd. and Humbug-Humboldt Rd., to south along Prattville, Butt Valley Reservoir Rd. to the south shore of Butt Valley Reservoir, from the south shore of Butt Valley Reservoir east to Long Valley.

P Zone 5- Evacuation Order for the communities along the west shore of Lake Almanor including Prattville and Lake Almanor West, beginning at the intersection of SR147 and SR89, west to the intersection of SR36 and SR89, south from the intersection of SR36 and SR89 to County Rd. 324, from the intersection of SR36 and County Rd. 324, east along Fox Farm Rd. to the intersection with South Almanor Rd.

P Zone 6- Evacuation Order Humbug Rd. from the intersection of the Humbug-Humboldt Road west to the Butte County line and everything south of the Humbug Road to Humboldt Road.

P Zone 6A- Evacuation Order beginning from the intersection of Humbug-Humboldt Crossing Rd and Fox Farm Rd, west along Fox Farm Rd to the intersection with SR36, south from the intersection of SR36 and Fox Farm Rd, south to the Butte County line, south along Butte County line to Humboldt Rd., east along Humboldt Rd to the intersection with Humbug-

<p>Evacuation Orders Cont. Plumas County</p>	<p>Humboldt Crossing Rd, continuing west to the Butte County Line, south along the Butte County Line to Humbug Rd, east along Humbug Rd to the intersection of Humboldt Rd.</p> <p>P Zone 10- <u>Evacuation Order</u> for the community of East Shore. The Order will include the intersection of SR147 and County Road A13, east to Little Dyer Mountain, southeast to Dyer Mountain, south to SR89, west to SR147, north to County Road A13.</p> <p>P Zone 11- <u>Evacuation Order</u> for the community of Round Valley Reservoir and Long Valley will include SR89 near the Clear Creek to the SR70, south to SR70 at the Feather River, east along SR70 to the intersection of SR89, north on SR89 to Dixie Creek due north to Seltzer Road.</p> <p>P Zone 12- <u>Evacuation Order</u> for the community of Butterfly Valley. The Order will include Feather River Hot Springs east on SR70 to Barlow Road, southwest to Oroville-Quincey Highway, west to Snake Lake Road, north to Feather River Hot Springs.</p> <p>P Zone 12A- <u>Evacuation Order</u> for the community of Butterfly Valley. The Evacuation Order is to begin at Blackhawk Rd at SR70, to west on Snake Lake Rd to the intersection with Powerline Easement, continuing west from the intersection of Snake Lake Rd and Powerline Easement to the Hambly Ravine, from the Hambly Ravine north to SR70, continuing east along the SR70 Corridor to the intersection with SR89 (Greenville Wye), from the intersection with SR70 and SR89 (Greenville Wye), continuing east along the SR70 corridor to the intersection with Blackhawk Rd.”</p> <p>P Zone 13- <u>Evacuation Order</u> for the community of the northeast side of Indian Valley. The Order will include Dyer Mountain, southeast to Keddie Ridge, southeast to Diamond Mountain Road, west to Stampfli Lane, north to Wolf Creek, northwest to the intersection of N Valley Road and Pecks Valley Road, north to the intersection of Williams Valley Road and Lower Williams Valley Road, northwest to SR89 at Second Water Tower Creek, north to Dyer Mountain.</p> <p>P Zone 14- <u>Evacuation Order</u> for the community of Greenville and Crescent Mills. The order will include SR89 at Dixie Creek, northeast to Stampfli Lane, north to Wolf Creek, northwest to SR89, north on SR89 to Hauns Creek.</p> <p>P Zone 15- <u>Evacuation Order</u> for the community of Taylorsville. The order will include SR89 at Moccasin, northeast to Stampfli Lane at Indian Creek, east to Diamond Mountain Road, south to Genesee Road at N Valley Road, west to SR89 at Indian Falls, northeast to Moccasin.”</p> <p>P Zone 16- <u>Evacuation Order</u> for the community of Mount Hough. The order will include SR89 at Indian Falls, east to Genesee Road at N Valley Road, south to the intersection of Forest Service Road 25N14 and Forest</p>
---	--

<p>Evacuation Order Cont. Plumas County</p>	<p>Service Road 24N85, west to SR70 at Barlow Road, north to SR89 at Indian Falls.</p> <p>P Zone 17 B - <u>Evacuation Order</u> to include the areas north of Chandler Road. Chandler Road at Oakland Camp Road east to State Route 70, north from the intersection of State Route 70 to the south border of Canyon Railroad Subdivision. The northern borders of Zones 17 and 17A are moved to the south edge of Chandler Road and remain in Evacuation Warning status.</p> <p>P Zone 18- <u>Evacuation Order</u> for the Peter’s Creek Area. The Order begins at Taylorsville Rodeo Grounds north to Keddie Peak, continuing north along Cook’s creek to Springs Creek, east to Enlge Mine, south from Engle Mine to Peter’s Creek, continuing south along Peter’s Creek to Taylor Diggings, west from Taylor Diggings to Talyorsville Rodeo grounds.</p> <p>P Zone 21- <u>Evacuation Order</u> for the area of Little Grizzly Creek. The Order will begin intersection 25N14 and 24N85, east to the intersection of 113 and 24N60, north to the east end of 25N42C, west to just south of Gaging Station, south to 25N14 and 24N85.</p> <p>P Zone 28- <u>Evacuation Order</u> for the Genesee Valley. The Order will begin east of Taylorsville along Genesee Rd corridor continuing east along Genesee Indian Creek and ending at 27N09.</p>
<p>Evacuation Warnings Cont. Plumas County</p>	<p>P Zone 7- <u>Evacuation Warning</u> for the community of Stover. The warning will include the intersection of SR89 at SR36, west on SR36 to the Pacific Crest Trail, north to Willow Springs Campground, northeast to the intersection of Old Red Bluff Hwy. and Warner Valley Rd., south to the intersection of SR89 and SR36.</p> <p>P Zone 8- <u>Evacuation Warning</u> for the community of Chester. The warning will include the intersection of Old Red Bluff Hwy. and Warner Valley Rd., east to Lake Chance Campground, south to SR36 on the causeway, southwest to the intersection of SR89 and SR36, north to the intersection of Old Red Bluff Hwy. and Warner Valley Road.</p> <p>P Zone 9- <u>Evacuation Warning</u> for the communities of Peninsula and Hamilton Branch. The warning will include SR36 on the causeway, east to the Lassen County Line, south on SR147 to County Road A13, south to Peninsula Point, north to the SR36 causeway.</p> <p>P Zone 17- <u>Evacuation Warning</u> for the community of Quincy. The Warning will include SR70 at Barlow Road, east to the intersection of Forest Service Road 25N33, south along the Canyon Subdivisions Railroad to the intersection of Mt. Hough Crystal Lake Rd and Quincy Junction Rd, south along Quincy Junction Rd to the intersection with SR89, east on SR89 to</p>

Radio Hill Rd and south to Peppard Flat Rd, northwest through Boil Ravine to Quincy-Oro Highway, north along SR70 to the intersection with Old Highway Rd.

P Zone 17A - Evacuation Warning for the areas of east Quincy. The Warning encompasses Peppard Flat north of Highway 70, west on Highway 70 to Quincy Junction Road, north on Quincy Junction Road to the Canyon Subdivision Railroad, east to Forest Service Route 25N07, south to Thompson Creek, and areas west of La Porte Road to Peppard Flat Road.

P Zone 19 Evacuation Warning The Warning will include the USFS Road 28N32 intersection of Plumas/Lassen Line, east to Diamond Mountain area, and south to Lone Rock.

P Zone 20 Evacuation Warning The Warning will include Taylor Diggings Mine, north to Engel Mine, east to Lower Lone Rock, south to the Border of Zone 28, and west to the Taylor Diggings Mine.

P Zone 22 Evacuation Warning The Warning will include the area of Spring Gardens and Greenhorn Creek Ranch area. Specifically, Laporte road at Thompson Creek, north to Empire ravine, east to Cascade creek south to 508 Road, southwest to the south of Lee Summit to Fells Flat, and northwest to the Laporte Road.

P Zone 31 Evacuation Warning The Warning will include Beckwourth-Genesee at Clover Creek Loop, north to area of Drum Bridge and to the area of Babcock crossing, east to Big Flat Spring, south to 25N05, and west to Beckwourth Genesee Road.

P Zone 33 Evacuation Warning The Warning will include McDermott Ravine north to Drum Bridge East to Crystal Creek, South to 23N45, and west to McDermott Ravine.

**Plumas County
Map/Resources**



Plumas County Website: <https://www.plumascounty.us>


Sheriff Website: <https://plumascounty.us/587/Sheriff->


Coroner Sheriff Dixie Fire Information:

<https://tinyurl.com/2t3kuv69>

Sheriff Facebook: <https://www.facebook.com/plumascountysheriff>

Plumas National Forest: <https://www.fs.usda.gov/plumas>

<p>Butte County</p> <p>Butte County Resources</p>	<p>BUTTE COUNTY</p> <p>Per the Butte County Sheriff's Office:</p> <p><u>Evacuation Orders</u> for the communities of Jonesville, Philbrook and all High Lakes areas within Butte County.</p> <p><u>Evacuation Order</u> for the area of Butte Meadows. The order will begin SR32 at the Butte and Tehama County line, east to the area of Cherry Hill Campground, southeast to Snag Lake, southwest to Skyway at Bull Creek, north along Skyway to Humboldt Road.</p> <p><u>Evacuation Warning</u> area to include the Tehama County line east to Old Loma Rd., Carpenter Ridge east to Skyway, Skyway north from Humbug Summit line to Butte Creek, all the Fish Creek area within Lassen National Forest area road, Pulga and Philbrook areas east of the west branch of the Feather River, west of SR70 north of Magalia, intersection of SR70 at Pulga Rd., south of the Plumas County line, and Inskip areas.</p> <p>Butte County Website: http://www.buttecounty.net/ Sheriff Website: http://www.buttecounty.net/sheriffcoroner Sheriff Facebook: https://www.facebook.com/bcsonews Sheriff Twitter: @ButteSheriff Evacuation Map: https://tinyurl.com/4nm69873</p>
<p>Lassen County Sheriff</p> <p>Lassen County Resources</p> 	<p>LASSEN COUNTY</p> <p>Per the Lassen County Sheriff's Office:</p> <p>Lassen County Web site: http://www.co.lassen.ca.us Sheriff Website: https://tinyurl.com/sy9frpx6 Sheriff Facebook: https://www.facebook.com/LassenSheriff Lassen National Forest: https://www.fs.usda.gov/lassen</p> <p>LAS Zone E019 - <u>Evacuation Warning</u> has been issued for the area south of Mountain Meadows Reservoir Mountain Meadows Reservoir from Hamilton Branch waterway east to the Lassen/Plumas County line.</p>
<p>Tehama County Sheriff</p> <p>Evacuation Orders Tehama County Evacuation</p>	<p>TEHAMA COUNTY</p> <p>Per the Tehama County Sheriff's Office:</p> <p>T Zone 1- <u>Evacuation Order</u> - to include the area of Colby Creek. The order will begin at the Butte and Tehama County line, west along the Tehama County Line to the intersection with SR32, north along the SR32 corridor to</p>

<p>Warnings Tehama County</p> <p>Tehama County Resources</p> 	<p>the intersection with SR36, from the intersection with SR32 and SR36, east along SR36 to the intersection with Plumas and Tehama County Line. T Zone 2 - <u>Evacuation Warning</u> to include the area of Mill Creek. An evacuation warning has been issued by the Tehama County Sheriff's Office for the areas and communities south of the Mill Creek community continuing south to the community of Campbellville and east to highway 32.</p> <p>Tehama County Web site: https://www.co.tehama.ca.us/ Sheriff Website: https://tehamaso.org/ Sheriff Facebook: https://tinyurl.com/b8n26knm Tehama Alert: https://tehamaso.org/tehama-alert/ Tehama Evacuation Map: https://tinyurl.com/2adkfc8</p>
<p>Shelter Locations</p>	<p>Plumas County</p> <ul style="list-style-type: none"> • Veterans Memorial Hall at 225 Gay St. in Chester • Springs of Hope Church at 59 Bell Ln. in Quincy <p>Tehama County</p> <ul style="list-style-type: none"> • Ridge Way Park at 19725 Ridge Road in Red Bluff <p>Butte County</p> <ul style="list-style-type: none"> • Church of the Nazarene at 2238 Monte Vista Ave. Oroville • Lassen Community College at 478-200 CA-139 Susanville <p>American Red Cross Public Information Line (855) 755-7711</p>
<p>Animal Evacuation Centers</p>	<p>Plumas County</p> <ul style="list-style-type: none"> • Plumas County Fairgrounds 204 Fairground Road, Quincy (large animals) • 201 Mill Creek Road, Quincy (small animals) <p>Tehama County</p> <ul style="list-style-type: none"> • Tehama County Complex 1830 Walnut Street, Red Bluff (large and small animals) <p>Butte County</p> <ul style="list-style-type: none"> • Old County Hospital 2279 Del Oro Mono Suite E, Oroville
<p>Road Closures</p>	<p>Plumas County:</p> <ul style="list-style-type: none"> • SR70 at West Chandler Road • Road A13 at CA147 • SR70 at Ganser Park Drive • Chandler Road (West) at State Route 70 • Chandler Road (East) at State Route 70 • Chandler Road at Quincy Junction Road • Quincy Junction Road at Chandler Road • SR89 at Arlington Road • SR36 at SR89 • SR89 at SR147

Road Closures Cont.	Butte County: <ul style="list-style-type: none"> • SR70 at Deadwood Road • Humboldt at Bambi Inn • SR32 at Upper Humboldt Road Tehama County <ul style="list-style-type: none"> • SR32 at SR36 <p>Current State Highway/Route information: roads.dot.ca.gov</p>			
National Forest Closures	<p>The Lassen National Forest (LNF) implemented Forest Order 06-21-05 as of July 16, 2021 (Dixie Fire Closure Order) to protect public health and safety through September 16, 2021. For additional information, visit the LNF Website: http://www.fs.usda.gov/lassen</p> <p>The Plumas National Forest (PNF) implemented Forest Order 05-11-00-21-15 as of July 16, 2021 (Dixie Fire Closure Order) to protect public health and safety. For additional information, visit the PNF Website: https://www.fs.usda.gov/plumas</p> <p>Forest Order 05-11-00-21-16 (Phases 1 and 2 Expanded Dixie Fire Emergency Area, Road, Trail, and Developed Recreation Site Closure Order) https://tinyurl.com/74hf8rk3</p>			
Lassen Volcanic National Park	Warner Valley and Jupiter Lake areas will be closed to all access and the entire park will be closed to back country camping.			
ASSIGNED RESOURCES				
Engines: 544	Water Tenders: 89	Helicopters: 34	Hand Crews: 90	Dozers: 124
Other: 934		Total Personnel: 5,461		
Air Tankers:	Numerous firefighting air tankers from throughout the state are flying fire suppression missions as conditions allow.			
Cooperating Agencies: Plumas National Forest, Lassen National Forest, Butte County Sheriff's Office, Plumas County Sheriff's Office, California Highway Patrol, Pacific Gas & Electric, Union Pacific Railroad, Sierra Pacific Industries, CAL OES, CAL-EMSA, California National Guard, California Conservation Corps, CAL TRANS, California Department of Corrections and Rehabilitation, Burlington Northern Santa Fe, and National Park Service				

To learn more about wildfire preparedness visit:

www.readyforwildfire.org

###

DIXIE FIRE ONLINE RESOURCES



Evacuation Maps

Butte And Plumas Counties Evacuations

<https://tinyurl.com/4nm69873>

Tehama County

<https://211norcal.org/dixiefire/>

Sheriff Offices

Butte County Sheriff Butte County

[@ButteSheriff](https://www.facebook.com/bcsonews)

[@ButteSheriff](https://twitter.com/ButteSheriff)

Plumas County Sheriff

<https://www.facebook.com/plumascountysheriff>

@plumascountysheriff

US. Forests

U.S. Forest Service-Plumas National Forest

[@USFSPlumas](https://www.facebook.com/USFSPlumas)

[@USFSPlumas](https://twitter.com/USFSPlumas)

Lassen Forest <https://www.facebook.com/LassenNF>

[@LassenNF](https://twitter.com/LassenNF)

CAL FIRE

CAL FIRE Lassen-Modoc Unit <https://www.facebook.com/CALFIRELMU>

@CALFIRELMU <https://twitter.com/CALFIRELMU> @CALFIRELMU

CAL FIRE Butte Unit <https://www.facebook.com/CALFIREButteCo>

@CALFIREButteCo https://twitter.com/CALFIRE_ButteCo

@CALFIRE_ButteCo

CAL OES

CAL OES <https://www.facebook.com/CaliforniaOES>

@Cal_OES https://twitter.com/Cal_OES

National Park

Lassen Volcanic National Park

<https://www.nps.gov/lavo/index.htm>

[@LassenNPS](https://www.facebook.com/LassenNPS)

[@LassenNPS](https://twitter.com/LassenNPS)

Counties

Butte County

[@CountyofButte](https://twitter.com/CountyofButte)

Plumas County

[@PlumasCountyCA](https://twitter.com/plumascountyca)

Lassen County

<https://www.facebook.com/LassenSocialMedia/> @LassenSocialMedia

Tehama County

<https://www.co.tehama.ca.us/>

Cooperating Agencies:

California Highway Patrol

<https://www.facebook.com/chp>

<https://twitter.com/CHPAAlerts>

Pacific Gas & Electric

<https://www.facebook.com/pacificgasandelectric>

[@PGE4Me](https://twitter.com/PGE4Me)

Resource Center

To support local residents affected by power outages related to the Dixie Fire, an outdoor Community Resource Center (CRC) has been opened at Janesville Elementary School, 464-555 Main St., in Janesville (Lassen County). Open 8 a.m. to 10 p.m. daily until power is restored.

Burlington Northern Santa Fe

<https://www.facebook.com/BNSFRailway>

Union Pacific Railroad

<https://www.facebook.com/unionpacific>

[@unionpacific](https://twitter.com/unionpacific)

Sierra Pacific Industries

<https://www.facebook.com/SierraPacificIn/>

[@sierrapacificin](https://twitter.com/sierrapacificin)

CAL-EMSA

<https://www.facebook.com/CAEMSA>

California National Guard

<https://www.facebook.com/CAGUARD>

California Conservation Corps

<https://www.facebook.com/californiaconservationcorps>

CAL TRANS – District 2

<https://www.facebook.com/caltransdistrict2redding>

Twitter: Caltransdistrict2 @CaltransD2

Local Resources

Lake Almanor Area

<https://www.facebook.com/lakealmanorarea> @LakeAlmanorArea

<https://twitter.com/LakeAlmanorArea> @LakeAlmanorArea

Indian Valley Fire Rescue

<https://www.facebook.com/indianvalleyfiredepartment>

Indian Valley Chamber of Commerce

<https://www.facebook.com/IVCoC>

Plumas News

<https://www.facebook.com/Plumasnews>

<https://www.plumasnews.com/>

Chester Fire

<https://www.facebook.com/ChesterFire>

Air Quality / Wildland Smoke Resources

Wildfire Smoke – Eastern Sierra

<https://wildlandfiresmoke.net/outlooks/EasternSierra>

Northern Sierra Air Quality Management District-

<https://myairdistrict.com/>

Lassen County Air Pollution Control District

<http://www.lassenair.org/>

Feather River Air Quality Management District

<https://www.fraqmd.org/>

Butte County Air Quality Management District

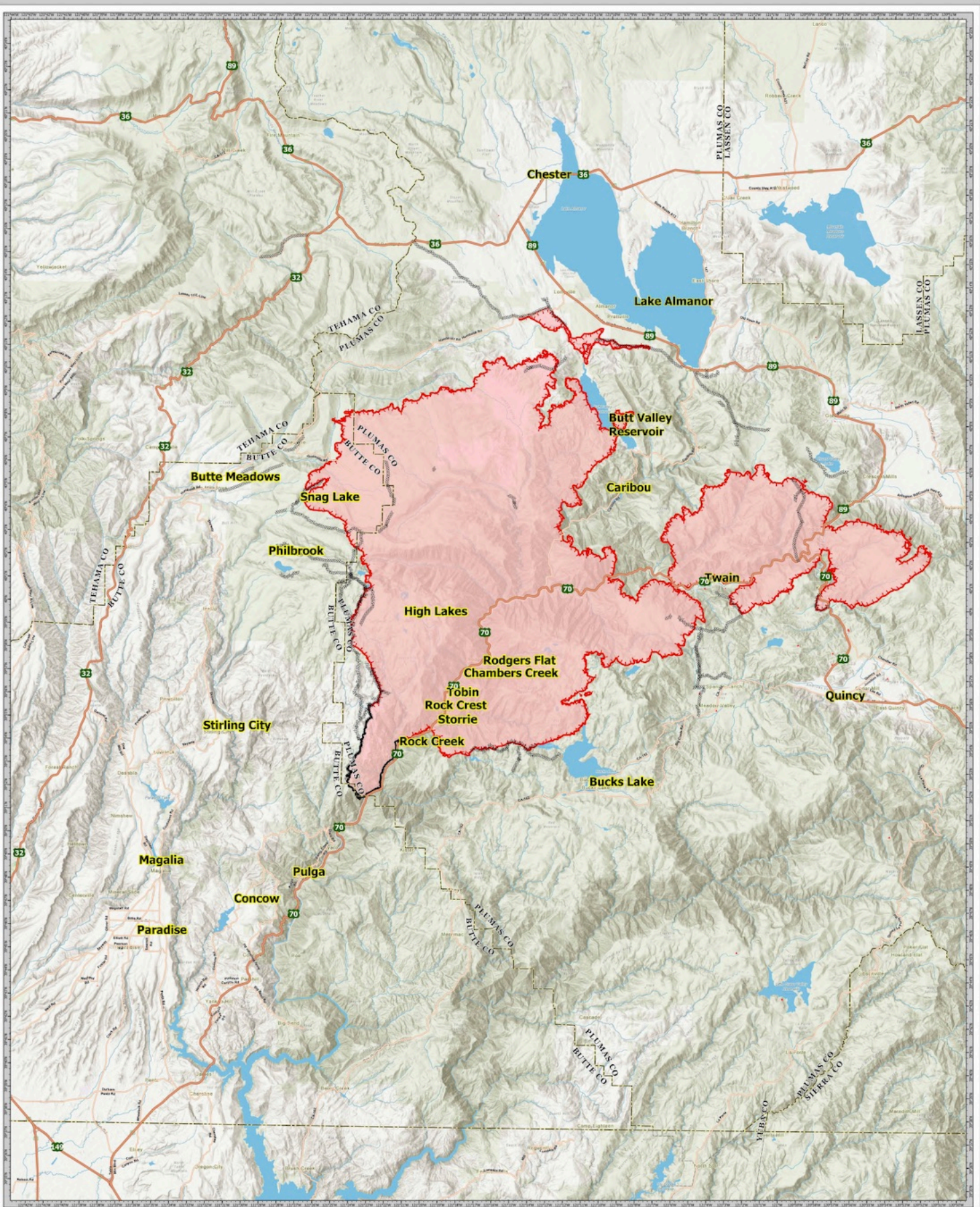
<https://bcaqmd.org/>

California Smoke Information

<http://californiasmokeinfo.blogspot.com/>

AirNow Fire and Smoke Map

<https://fire.airnow.gov/?lat=39.8196736&lng=-120.47810559999999&zoom=10>



PUBLIC INFORMATION
Dixie Fire
 CA-BTU-009205
 07/25/2021



 Shaded Daily Fire Perimeter
 Dike Line

0 0.25 0.5
 Miles
 0 0.25 0.5
 Kilometers

Dixie Fire
 CA-BTU-009205
 07/25/2021

Dixie Fire
 CA-BTU-009205
 07/25/2021