



DIXIE FIRE INCIDENT UPDATE

Date: 7/21/2021 Time: 7:00 p.m.



@CALFIRE_ButteCo
@USFSPlumas
@LassenNF



@CALFIREButteCo
@USFSPlumas
@LassenNF

Information Line: (530) 538-7826
Media Line: (530) 588-0845
Incident Website: www.fire.ca.gov

INCIDENT FACTS

Incident Start Date: 7/13/2021		Incident Start Time: 5:15 p.m.
Incident Type: Vegetation		Cause: Under Investigation
Incident Location: Feather River Canyon near Cresta Powerhouse		
CAL FIRE Unit: Butte		
Unified Command Agencies: CAL FIRE, United States Forest Service		
Size: 91,268 acres	Containment: 15%	Expected Full Containment: Unknown
Civilian Injuries/Fatalities: 0		Firefighter Injuries/Fatalities: 0
Structures Threatened: 1500	Structures Destroyed: 8	Structures Damaged: 0

CURRENT SITUATION

Current Situation:



Incident Update

The Dixie Fire remained active throughout the day. Firefighters fought the fire aggressively from the ground and the air. Fireline construction and structure defense was on going and will continue overnight. The fire is burning in a remote area with limited access and steep terrain. The weather for tonight will bring Northeast winds 10-15 mph with gusts up to 25 mph. Fire will remain active overnight.

For more information on the Dixie Fire go to the following links:
CAL FIRE website: <https://www.fire.ca.gov/incidents>
USFS Information <https://inciweb.nwccg.gov/incident/7690/>

Evacuation Information:



Dixie Fire Evacuation Map

For Evacuation Orders, Warnings and Road Closures go to:

Per the **Butte County** Sheriff's Office,

Butte County Website: <http://www.buttecounty.net/>
Sheriff Website: <http://www.buttecounty.net/sheriffcoroner>
Sheriff Facebook: <https://www.facebook.com/bcsonews>
Sheriff Twitter: @ButteSheriff
Sheriff's Call Center: (530) 552-3010
Evacuation Map: <https://tinyurl.com/4nm69873>

BUTTE:

Evacuation Orders for the communities of Jonesville, Philbrook and all High Lakes areas within Butte County.



Lassen County Sheriff

Evacuation Warning area to include the Tehama County Line East to Old Loma Road
Carpenter Ridge East to Skyway
Skyway North from Humbug Summit line to Butte Creek
All the Fish Creek area within Lassen National Forest area road
Pulga and Philbrook Areas East of the West branch of the Feather River
West of SR70 North of Magalia
Intersection of SR70 at Pulga Rd, and South of the Plumas County Line.
Butte Meadows and Inskip areas

Per the **Lassen County** Sheriff's Office

Lassen County Web site: <http://www.co.lassen.ca.us>

Sheriff Website: <https://tinyurl.com/sy9frpx6>

Sheriff Facebook: <https://www.facebook.com/LassenSheriff>

Lassen National Forest: <https://www.fs.usda.gov/lassen>

Evacuation Information:



Plumas County Sheriff

Per the **Plumas County** Sheriff's Office

Plumas County Website: <https://www.plumascounty.us>

Sheriff Website: <https://plumascounty.us/587/Sheriff-Coroner>

Sheriff Dixie Fire Information: <https://tinyurl.com/2t3kuv69>

Sheriff Facebook: <https://www.facebook.com/plumascountysheriff>

Plumas National Forest: <https://www.fs.usda.gov/plumas>

Plumas County

Evacuation Orders West Shore of Lake Almanor from the Canyon Dam northwest to Hwy 36 at Hwy 89. This includes the communities of Pratville, Big Meadows, and Lake Almanor West along with the Rocky Point Campground and the Canyon Dam Boat Launch.

High Lakes (PLUMAS COUNTY) Recreational area of Plumas County east of the Butte Plumas County line. Plumas Butte County line east to Twain Includes both sides of Hwy 70 in the areas of Rock Creek, Storrie, Tobin, Belden, Caribou Rich Bar, and Twain.

Meadow Valley and Bucks Lake, Bucks Lake Rd. at Riverdance, and everything west, to the Butte Plumas County line. This includes Snake Lake, Meadow Valley, Tollgate, Bucks Lake, Bucks Lake Highlands, and all surrounding areas.

Caribou Rd. north to the Humbug Rd. and Humboldt Rd. intersection

This includes Belden Reservoir and Butt Valley Reservoir

Prattville Butt Reservoir Road and everything west, to the Butte Plumas County line. The community of Seneca south to Hwy 70

P Zone 1- Evacuation Order for High Lakes area, Storrie, Tobin, and Rock Creek. Evacuation Order for Belden, Rich Bar, Virgilia, Seneca, and Twain

	<p>communities along the SR70 corridor. Evacuation Order to begin at SR70 at Pulga Rd along the north edge of the SR70 corridor to Rich Bar Rd., from SR70 at Rich Bar Rd., to the north along the Pacific Crest Trail to the Plumas Co./Butte Co. line, from the Plumas Co./Butte Co. line west along the county line to the intersection of SR70 and Pulga Rd.</p> <p>P Zone 2- <u>Evacuation Order</u> for Meadow Valley and Bucks Lake communities. Evacuation to include the south edge of the SR70 corridor, from Belden east to Twain, south from Twain to Snake Lake Rd. at Bucks Lake Rd., to include the communities of Spanish Ranch and Meadow Valley, from south, on Bucks Lake Rd. at Snake Lake Rd. to the intersection of Bucks Lake Rd. and Big Creek (south), from the the intersection of Bucks Lake Rd. and Big Creek Rd. (south) along Bucks Lake Rd. to the Plumas/Butte Co. line, from Bucks Lake Rd. at the Plumas/Butte Co line to the north, along the Plumas/Butte Co. line, where it intersects with SR70 at Pulga Rd.</p>
Community Resource Center	<p>Lassen County</p> <p>To support local residents affected by power outages related to the Dixie Fire, an outdoor Community Resource Center (CRC) has been opened at Janesville Elementary School, 464- 555 Main St., in Janesville (Lassen County).</p> <p>The CRC will be open from 5 p.m. to 10 p.m. on Wednesday, July 21, and from 8 a.m. to 10 p.m. on Thursday, July 22.</p>
Road Closures:	<p>Plumas County:</p> <ul style="list-style-type: none"> • Camp Creek Road • State Route 70 at the North junction with SR 89 Greenville Wye • Oroville-Quincy Highway at Plains Rd at French House • Bucks Lake Rd at River Dance • State Route 89 at State Route 36 • State Route 89 at State Route 147 <p>Butte County:</p> <ul style="list-style-type: none"> • State Route 70 is closed from 14.3 miles East of the junction of SR 191 (Jarbo Gap at CAL FIRE Station 36 • Bucks Lake Rd from Riverdance west to Mountain House in Butte County • For current State Highway/Route information visit roads.dot.ca.gov
Evacuation Shelter Information:	<p>Plumas County:</p> <p>An evacuation shelter is being opened at the Springs of Hope Church in Quincy at 59 Bell Lane. If there is no attendance the shelter may close, at which time you can call 283-6300 if you need shelter because of being evacuated.</p>
Evacuation Center Information	<p>An Evacuation Center is being opened at Memorial Hall at 180 Gay St, Chester, CA.</p>
Animal Evacuation Centers	<p>If you need assistance with animals contact Plumas County Animal Services at (530)283-3673 or after hours (530)283-6300 Large</p>

	animals and livestock can also be accommodated.
National Forest Closures:	<p>The Lassen National Forest (LNF) implemented Forest Order 06-21-05 as of July 16, 2021 (Dixie Fire Closure Order) to protect public health and safety through September 16, 2021. For additional information, visit the LNF Website: http://www.fs.usda.gov/lassen</p> <p>The Plumas National Forest (PNF) implemented Forest Order 05-11-00-21-15 as of July 16, 2021 (Dixie Fire Closure Order) to protect public health and safety. For additional information, visit the PNF Website: https://www.fs.usda.gov/plumas</p>
ASSIGNED RESOURCES	
Engines: 337	Water Tenders: 55 Helicopters: 22 Hand Crews: 71 Dozers: 83
Other: 89	Total Personnel: 3,919
Air Tankers:	Numerous firefighting air tankers from throughout the State are flying fire suppression missions as conditions allow.
Cooperating Agencies: Plumas National Forest, Lassen National Forest, Butte County Sheriff's Office, Plumas County Sheriff's Office, California Highway Patrol, Pacific Gas & Electric, Union Pacific Railroad, Sierra Pacific Industries, CAL OES, CAL-EMSA, California National Guard, California Conservation Corps, CAL TRANS and California Department of Corrections and Rehabilitation	

To learn more about wildfire preparedness visit:
www.readyforwildfire.org

###

DIXIE FIRE ONLINE RESOURCES



Sheriff Offices

Butte County Sheriff Butte County

<https://www.facebook.com/bcsonews> @ButteSheriff

<https://twitter.com/ButteSheriff> @ButteSheriff

Plumas County Sheriff

<https://www.facebook.com/plumascountysheriff>

@plumascountysheriff

US. Forests

U.S. Forest Service-Plumas National Forest

<https://www.facebook.com/USFSPlumas> @USFSPlumas

<https://twitter.com/USFSPlumas> @USFSPlumas

Lassen Forest <https://www.facebook.com/LassenNF>

<https://twitter.com/LassenNF> @LassenNF

CAL FIRE

CAL FIRE Lassen-Modoc Unit <https://www.facebook.com/CALFIRELMU>

@CALFIRELMU <https://twitter.com/CALFIRELMU> @CALFIRELMU

CAL FIRE Butte Unit <https://www.facebook.com/CALFIREButteCo>

@CALFIREButteCo https://twitter.com/CALFIRE_ButteCo

@CALFIRE_ButteCo

CAL OES

CAL OES <https://www.facebook.com/CaliforniaOES>

@Cal_OES https://twitter.com/Cal_OES

National Park

Lassen Volcanic National Park

<https://www.facebook.com/LassenNPS> @LassenNPS

<https://twitter.com/LassenNPS> @LassenNPS

Counties

Butte County

<https://twitter.com/CountyofButte> @CountyofButte

Plumas County

<https://twitter.com/plumascountyca> @PlumasCountyCA

Lassen County

<https://www.facebook.com/LassenSocialMedia/> @LassenSocialMedia

Cooperating Agencies:

California Highway Patrol

<https://www.facebook.com/chp>

<https://twitter.com/CHPAAlerts>

Pacific Gas & Electric

<https://www.facebook.com/pacificgasandelectric>

<https://twitter.com/PGE4Me> @PGE4Me

Union Pacific Railroad

<https://www.facebook.com/unionpacific>

<https://twitter.com/unionpacific> @unionpacific

Sierra Pacific Industries

<https://www.facebook.com/SierraPacificIn/>

<https://twitter.com/sierrapacificin> @sierrapacificin

CAL-EMSA

<https://www.facebook.com/CAEMSA>

California National Guard

<https://www.facebook.com/CAGUARD>

California Conservation Corps

<https://www.facebook.com/californiaconservationcorps>

CAL TRANS – District 2

<https://www.facebook.com/caltransdistrict2redding>

Twitter: Caltransdistrict2 @CaltransD2

Local Resources

Lake Almanor Area

<https://www.facebook.com/lakealmanorarea> @LakeAlmanorArea

<https://twitter.com/LakeAlmanorArea> @LakeAlmanorArea

Indian Valley Fire Rescue

<https://www.facebook.com/indianvalleyfiredepartment>

Indian Valley Chamber of Commerce

<https://www.facebook.com/IVCoC>

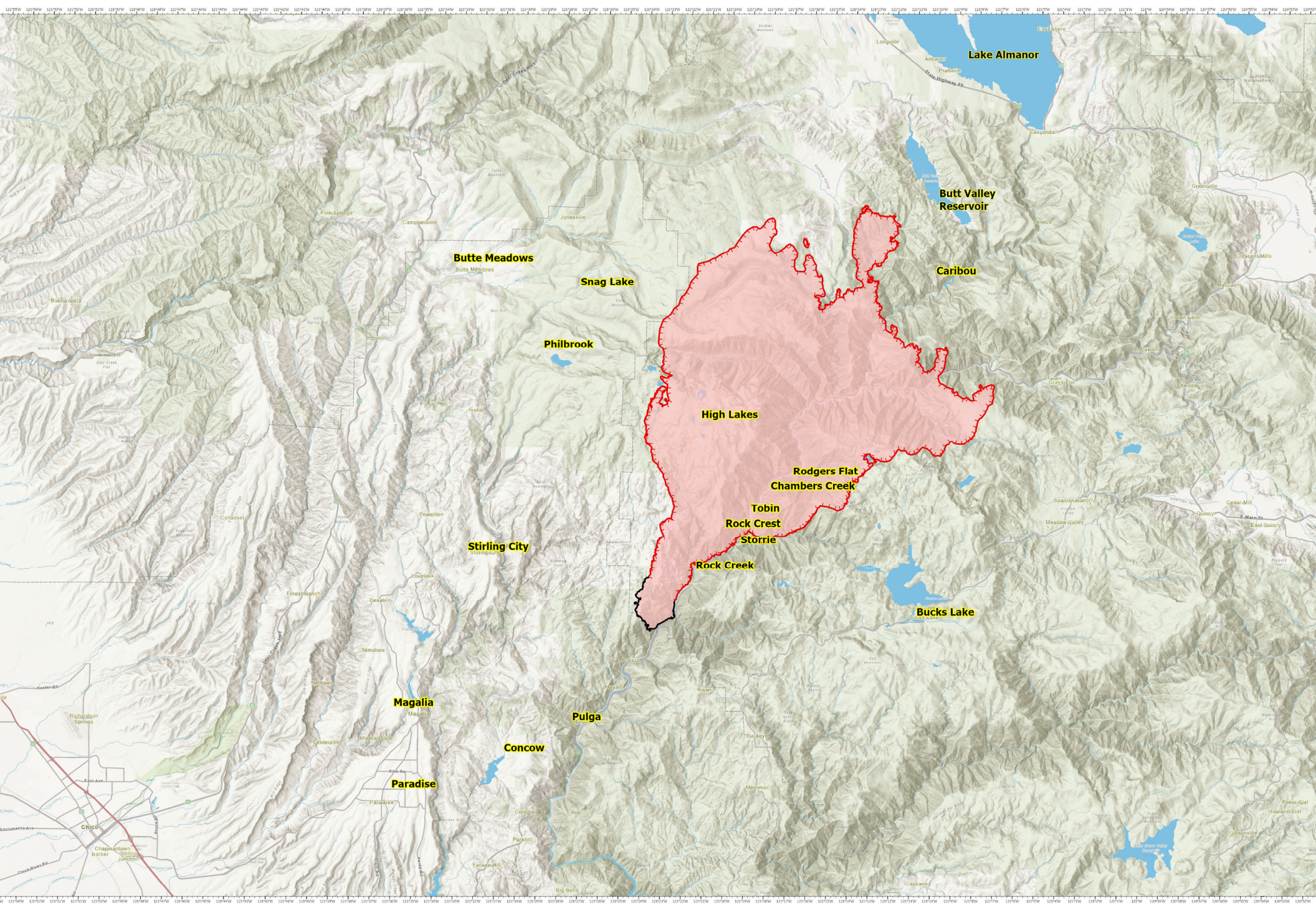
Plumas News

<https://www.facebook.com/Plumasnews>




<https://www.plumasnews.com/>

Chester Fire

<https://www.facebook.com/ChesterFire>



Dixie Fire
 CA-BTU-009205
 PIO
 07/21/2021

-  Fire Edge
-  Contained Line
-  Wildfire Daily Fire Protection

PUBLIC INFORMATION

Dixie Fire

CA-BTU-009205
 07/21/2021



Dixie Fire
 CA-BTU-009205
 PIO
 07/21/2021